

How to Import a CD in Opal-RAD

In Opal-RAD, you can import studies from a CD, as long as the format of these studies is in a standard DICOM format. The Opal-RAD import process can be done at present time in one of 2 ways: via the Opal-RAD client (in all versions of Opal-RAD); or via Opal Web (from Opal-RAD version 2.3.3 or higher). This “How to” guide will review both processes.

To Import a CD – via Opal Client:

1. Insert the Disk with the studies to be imported. . If any auto-play pop up from Windows or any other application shows asking to use to open such disc, just close them up.
2. Launch the Opal-RAD Client



Figure 1

3. Left-click on the Import CD button Figure 1

4. Opal Import window will display Figure 2

5. Left Click on the “Select Files/Folder or DICOMDIR to Import” button. Figure 2

6. You can choose the parameters or conditions to apply to the studies being imported prior to be placed in the Opal-RAD Database:

- **Do Not Compress** – if no checked, files will be compressed using a JPEG2000 format.
- **DB Only** – Images will not be imported, just the DICOM information and placed in the Opal-RAD Database.
- **Isolate Fails** – will place in local machine’s cache folder the files that were not imported successfully.

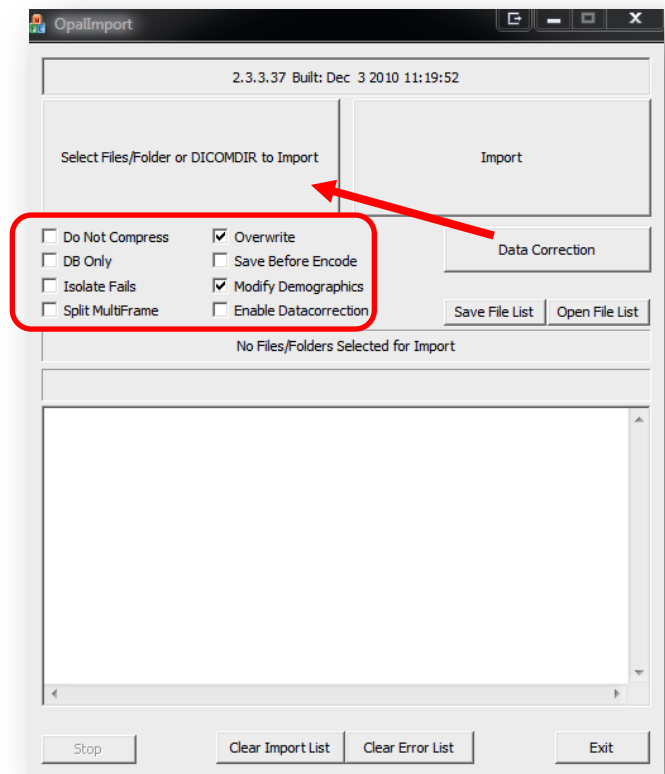


Figure 2

- **Split MultiFrame** – To be used if images in a series are desired to be one image per series.
- **Overwrite** – If a study to be imported already exists in Opal-RAD, the newly imported one will replace the old one (including annotations and markings).
- **Save Before Encode** – This option will make the images be placed in a cache folder in the local machine and not in the Opal-RAD Database. This is mainly used for debugging or troubleshooting purposes only.
- **Modify Demographics** – Every study before being imported it will cause the following screen to appear: where you can edit patient’s information such as patient ID, Name or Date of Birth. Figure 3

The screenshot shows a dialog box titled "Modify/Confirm Demographics". It is divided into two main sections: "Current Info" and "New Info".

Current Info:

- Id:** CR-Test2
- Name:** Sampler^John^D^^
- DOB:** 19720819

New Info:

- Id:** CR-Test2
- Name:** Sampler^John^D^^
- Format:** Lastname^Firstname^MI^Prefix^Suffix
- DOB:** 19720819
- Format:** YYYYMMDD (no slashes or dashes)

DB Query:

PID	Name	DOB
CR-Test2	Sampler^John^D^^	19720819

At the bottom of the dialog box, there are four buttons: "CANCEL IMPORT", "QUERYDB", "USE CURRENT", and "MODIFY".

Figure 3

- **Enable Data Correction** – Allows you to modify or move contents of DICOM tags, like the ones applied in Dicom Receive or Opal Listener. You can enter the data correction details by clicking on the “Data Correction” box.

7. Click on “Import”. In the lower portion of the import screen you will be able to see the progress of the process.

Import CD – Via Opal Web (only from Opal-RAD version 2.3.3 and higher)

For this feature to function properly the following have to be done or checked:

1. From the Opal Web screen, download/Install the **Opal Tools** from Opal Web (top right - next to opal viewer).

This tool is the same as one installed in opal client, which is the 'Opal Import". If you have problems installing this tool, check with your IT or Network Administrator to ensure that if your workstation is in a Domain environment, you have permission to install executable programs.

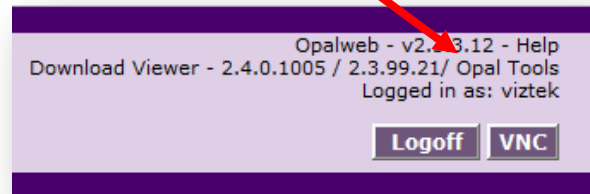


Figure 4

2. Click on the **Import CD** button from the bottom area and a window like the one shown in step 3 for Opal-Client on page 2 will be displayed as well as a small blank web window (you can close this window).

3. The options and progress of the import process are exactly the same as that for the Opal Client.

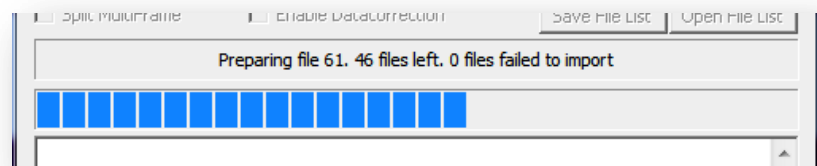


Figure 5

Note: - If there is a failure in the import process, make sure that the Opal Listener service is running in the Opal Server (through port 33336). This is the service used in Opal Web to get the imported studies into opal-RAD.