

Momentum-DR[®] GL-P is a high dynamic range glassless digital detector solution for general radiography.



4.3 HOURS OF USE
ON A 13 MINUTE CHARGE



HIGH DYNAMIC RANGE



LIGHTWEIGHT
LESS THAN 3.9 LBS



HIGH SENSITIVITY
72+% DQE
(0mR, 1 cyc/mm)



7 YEAR
POWER CELL WARRANTY



GLASSLESS DESIGN



BuiltTough



BEND RESISTANCE
Up to 286 lbs.



WATERPROOF
IP56 Compliant



STRONGER
Holds up to 881 lbs.



EASIER TO HOLD
60% Less Grip Strength Needed

The Momentum-DR[®] GL-P advantage.

The simple way to upgrade to DR. Our affordable and simple-to-install retrofit solutions that add the benefits of Digital Radiography capabilities to your existing x-ray.

20/20 Imaging delivers solutions that provide clinical and economic value to meet your needs. The Momentum-DR Glassless Flat Panel Detectors are our lightest, strongest and most sensible solution to help you improve efficiency and reduce user fatigue without compromise.

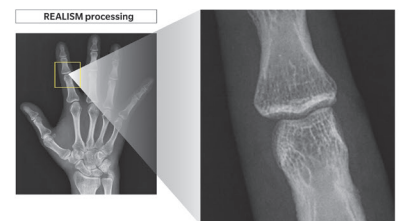
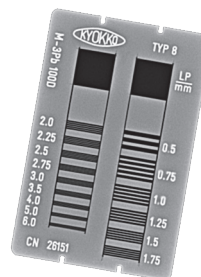
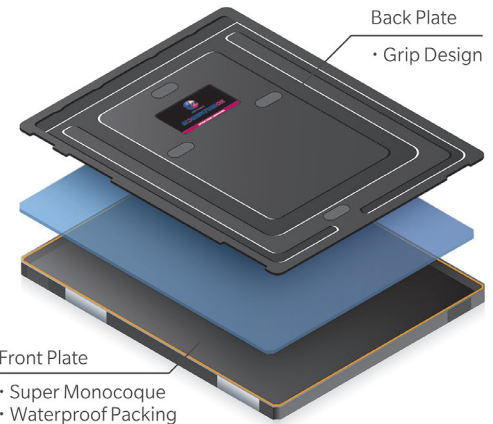
Increased sensitivity by replacing the glass substrate with a thin film transistor (TFT)

Momentum-DR Glassless Flat Panel Detectors use a thin film instead of a glass substrate to achieve lighter weight. Removing the glass reduces the distance between the scintillator and the TFT to increase sensitivity. The electronics are optimized to reduce electrical noise. Additionally, the Momentum-DR GL-P provides a High Dynamic Range option that provides a 200 μ resolution for a wider range of tone variations to visualize tissue.

Superb image quality - Glassless standard resolution imaging

- High-dynamic range imaging at 200 μ m resolution
- Power cell life up to 4.3 hours on full charge (1 LiC)
- 14"x17" panel weighs 3.9 lbs/1.8 kg super lightweight, including the capacitor
- IPX56 dust and liquid resistance (with integrated power supply)
- Image area 348.8 x 425.6mm
- External dimensions 15.1"x18.11"x0.6"
- Matrix size 1,744 x 2,128 (200 μ)
- Diagnostic view in 4 -7 seconds

High dynamic range takes advantage of REALISM image processing to enhance tone variation to visualize soft tissue with minimal impact to resolution at normal viewing ratios.



For more information about these products, please contact your 20/20 Imaging Sales Representative.

© 2023 Konica Minolta Healthcare Americas, Inc.



20/20 Imaging, a division of Konica Minolta
Healthcare Americas, Inc.
829 Virginia Rd. Ste. A
Crystal Lake, IL 60014
Tel: +1 (866) 734-6234
2020imaging.net

M2203 1023 RevA