

SONIMAGE HS1

Point-of-Care Hand-Carried Ultrasound System



The **Chiropractic** Solution with Best-In-Class Imaging, Easy to Use Workflow, Rapid Assessment, Clarity, and Confidence.

Superior Image Quality

- ▷ Superior image quality to detect structures as small as several hundred microns
- ▷ Simple Needle Visualization for increased accuracy of needle placement during both in-plane and out-of-plane techniques
- ▷ Broadband linear probe, ranging from 4 to 18 MHz, for deep and superficial structures
- ▷ Triad Tissue Harmonic imaging expands linear probe field of view
- ▷ Power Doppler Imaging displays the intensity of flow
- ▷ **PANORAMIC IMAGING** (Optional)

Streamlined Workflow

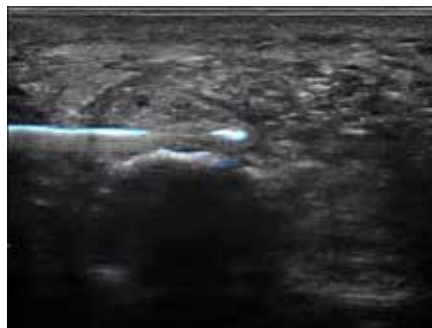
- ▷ Easy access to application specific measurements and annotations
- ▷ Customizable pre-sets
- ▷ Compare mode for side-by-side image comparison
- ▷ Two pedal foot switch (Optional)

Ease of Use

- ▷ Intuitive touch screen gestures
- ▷ Customizable screen design
- ▷ Simplified 8-button control panel
- ▷ Programmable quick keys
- ▷ VOICE CONTROL (Optional)
- ▷ One touch image optimization



Simple Needle Visualization



Intuitive Touchscreen



for more, visit
2020imaging.net/hs1

SONIMAGE HS1

Point-of-Care Hand-Carried Ultrasound System

Ergonomic and Portable

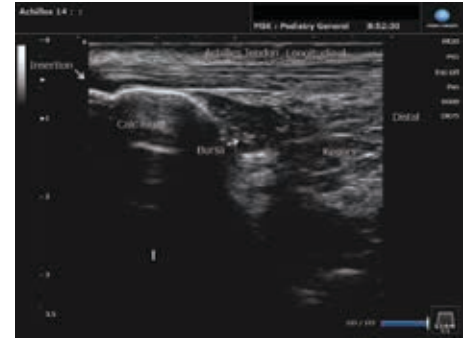
- ▷ Hand-carried 17.5 lb. system
- ▷ 15" high resolution anti-glare touch screen
- ▷ 180° swivel monitor for patient viewing
- ▷ Wireless LAN (optional)
- ▷ 5-year warranty

Successful Education & Practice Management

- ▷ SonoSim education simulator
- ▷ 1 day of clinical applications installation
- ▷ Practice management and reimbursement direction



RT Medial Elbow



Achilles Tendon Longitudinal



Anterior Shoulder



Biceps Tendon Sax



Fluid in Suprapatellar Space



Longitudinal Left Ant. Talo-Fib Ligament



Rotator Cuff Interval



Sciatic Nerve

Shown with optional Printer & add'l SONIMAGE HS1

2020imaging.net/hs1

