

Calibration Guide



www.2020imaging.net · 866.734.6234

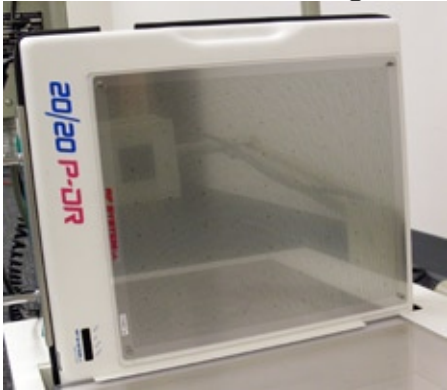
Acquire version 1.1.1.0 and compatible versions

Last Edited: August 24, 2009 3:28 PM

P-DR Panel Setup

1. Required components

RF LABS Calibration grid & pins



White "U" Bracket (& possible raiser)



***There are two different versions of the U Bracket.**

One is 2.25" deep, and another is 1.75" deep. If you have the 1.75" version, you do not need a raiser, if you have the 2.25" version, you need a raiser.

*the Raiser is anything about 1/2 to 3/4" high.

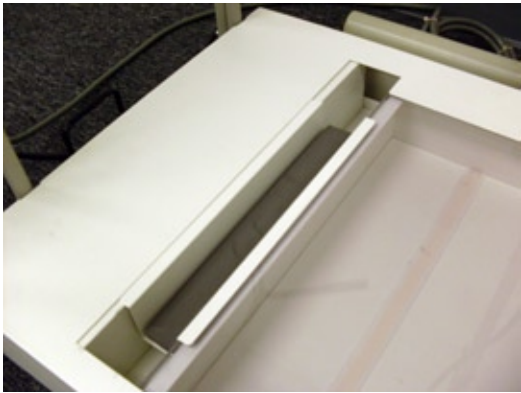
This is needed to raise the panel up so the calibration grid does not hit the base. It can be anything, such as a gauze pad, or a small biofreeze box.

2. Prepare

* If you have the 2.25" U Bracket version, place a raiser roughly 3/4" high into the "U" bracket



*Place the "U" bracket and raiser into the base



*Place P-DR Panel on top of "U" bracket and raiser, with the handle facing towards you



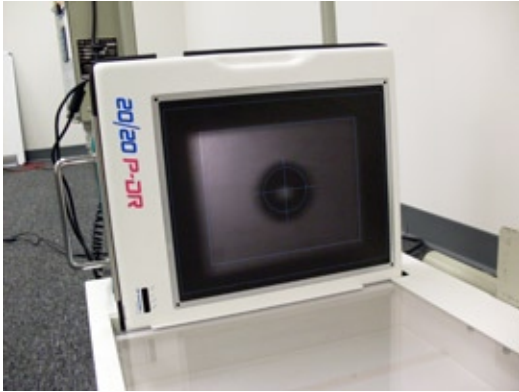
*Position the Tube Head (attached to swinging arm) for a lateral shot, except make the center of the tube head level with the center of the panel.



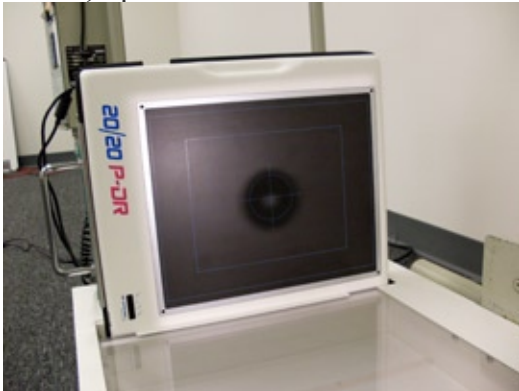
*Be sure the reading on the Tube Head is at 90 degrees



*You can check to be sure it is centered by turning on the light field, and expanding the columnators, but only to the amount of about 10x12”



*Now, open the columnators all the way so the light filed covers the entire panel

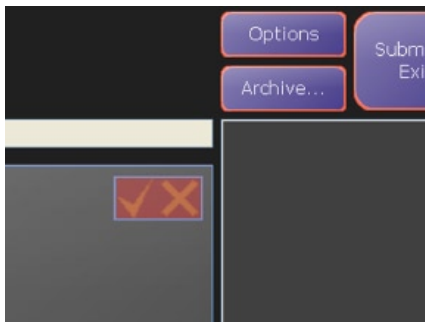


2. Software

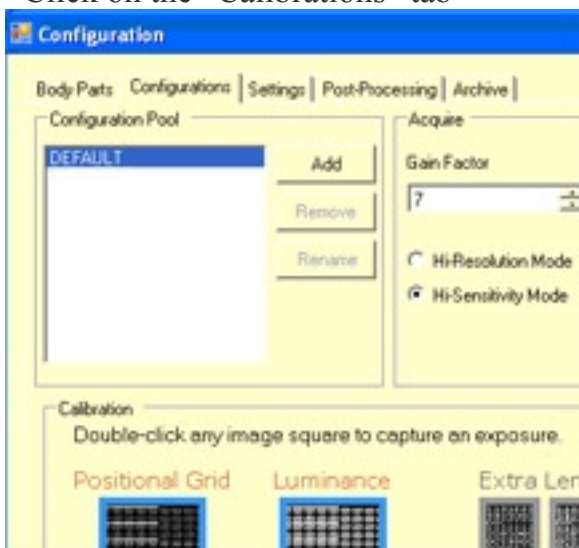
* Open OPALRAD/SPECTACLE StudyList software

*Start a new study by clicking “Acquire”. Fill in fields with TEST info

*Now in the Acquire software, click the “Options” button

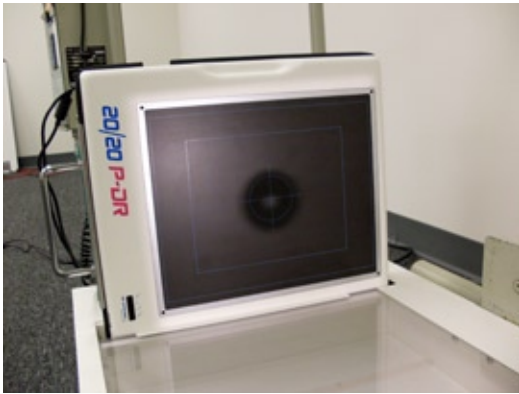


*Click on the “Calibrations” tab

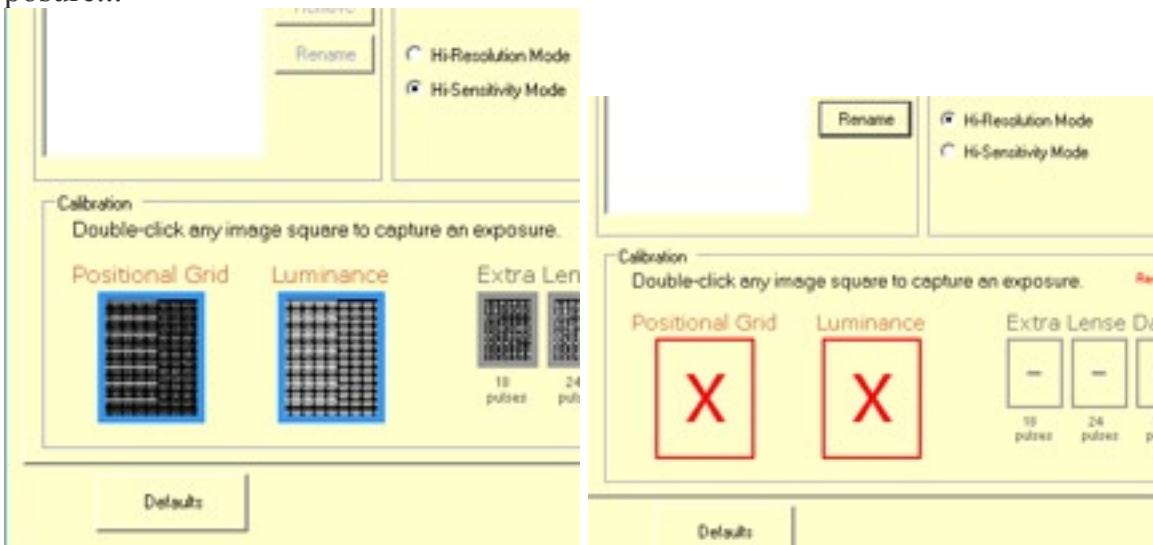


***Xcel Xray settings should stay the same, unless otherwise directed by a Clinical Apps Specialist at 20/20 Imaging**

*Be sure the P-DR Panel is set up with the light field correctly aligned, as described above.



*Double click the “Luminance” button. Wait until you see “Ready for Exposure”, then shoot an exposure...



*Note: you might see either a grid pattern, or a red X, either way, follow instructions as stated.



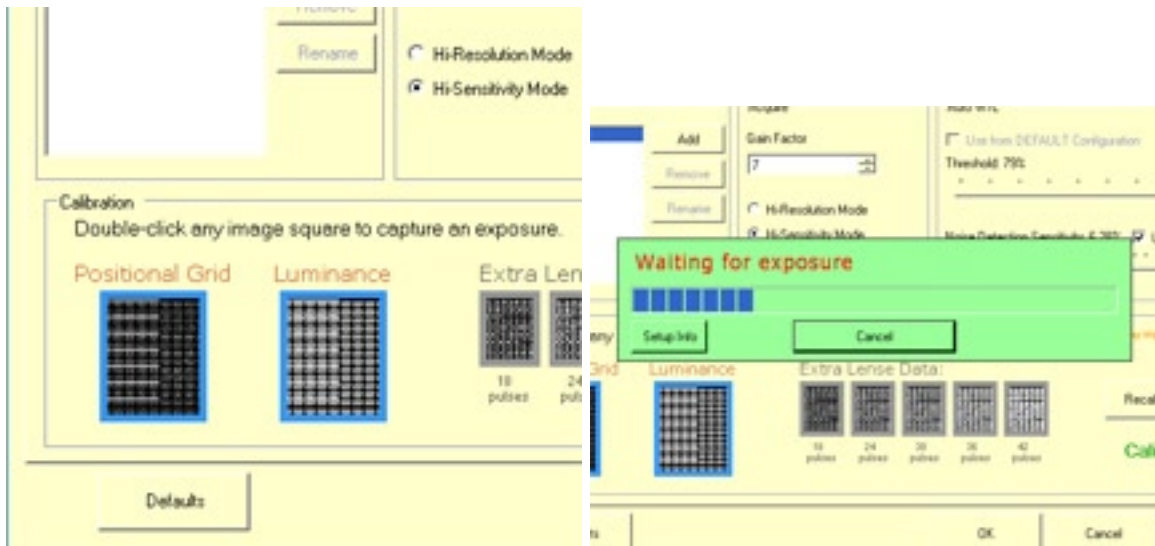
*Place the calibration grid onto the P-DR Panel, leaving the Panel in the same exact position. Try not to move it at all.

*Place the Calibration grid onto the P-DR Panel with the 4 silver pins

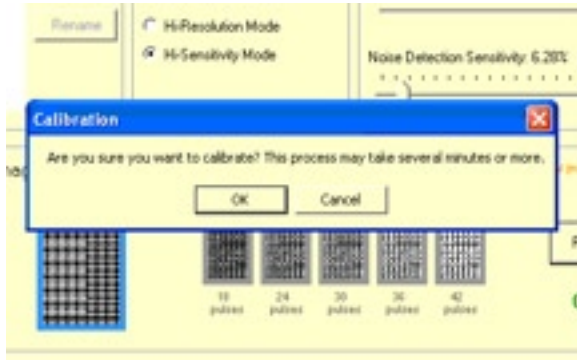


*NOTE: if the grid will not go on because it is hitting at the bottom at the base, be sure what your using to raise the panel up is tall enough

*Now double click the “Positional Grid” button. Wait until you see “Ready for Exposure”, then shoot an exposure...



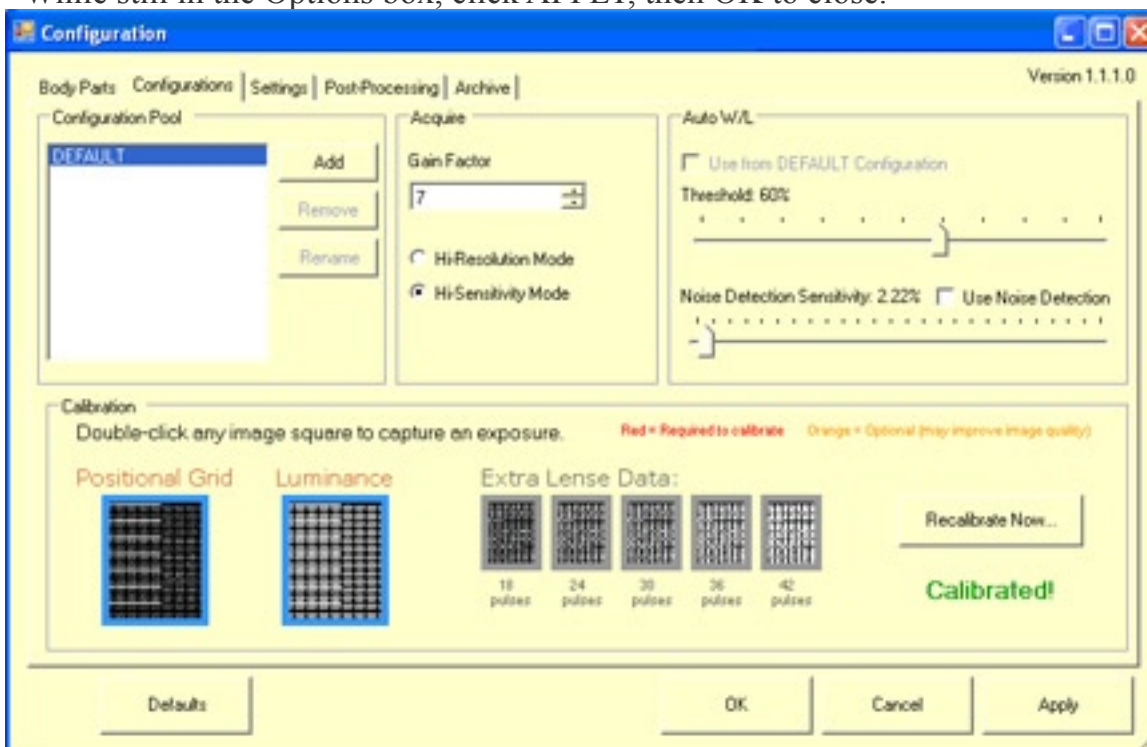
Click the “Recalibrate/Calibrate Now” button



*Confirm the message by clicking OK. Wait up to 3 minutes... until the message disappears.



*While still in the Options box, click APPLY, then OK to close.



*Take a couple of test shots as you are now recalibrated!

*If you ever encounter a problem in the future, you may follow these same steps again as needed.

