

OPAL License Rebuild Instructions

Problem: Some windows .net framework updates can conflict with use of the OpalRad Software. Our opal license uses Microsoft .net framework, when a large change or update occurs this can create and error “invalid License or Error” when attempting to login to the Opal Study list or Opal web portal.



To resolve error please follow the steps below.

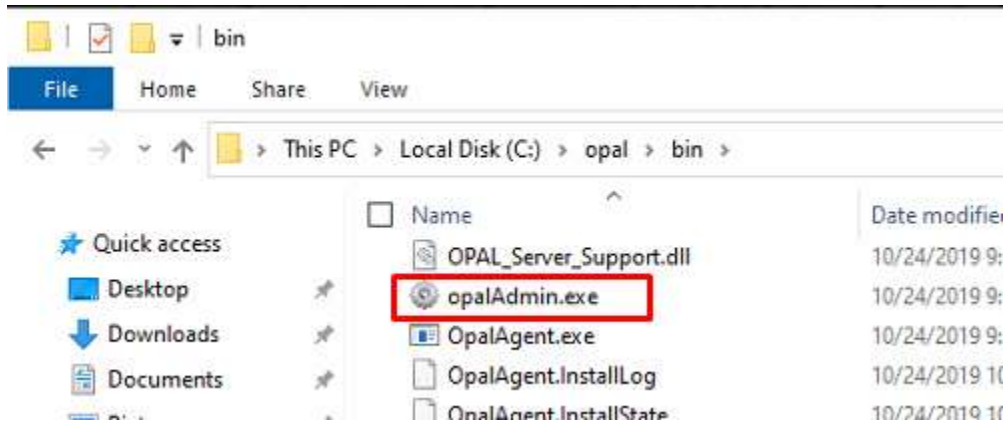
- 1) Open the **opaladmin.exe** application

A= located on the task bar on the desktop of opal sever pc



OPAL License Rebuild Instructions

B= located in the C:/opal/bin folder location on the opal sever pc

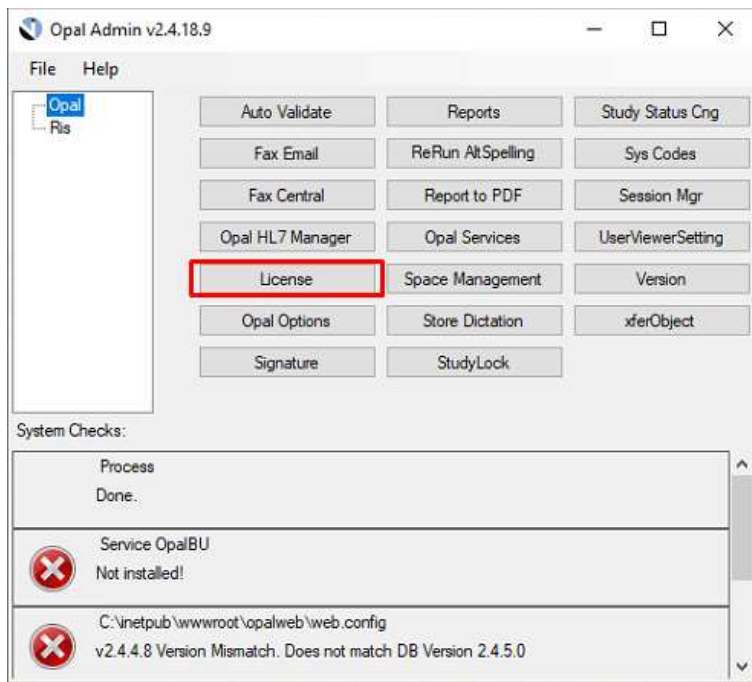


- 2) Login into Opal Admin
Use your current login (example user: admin PW: 2020tech)

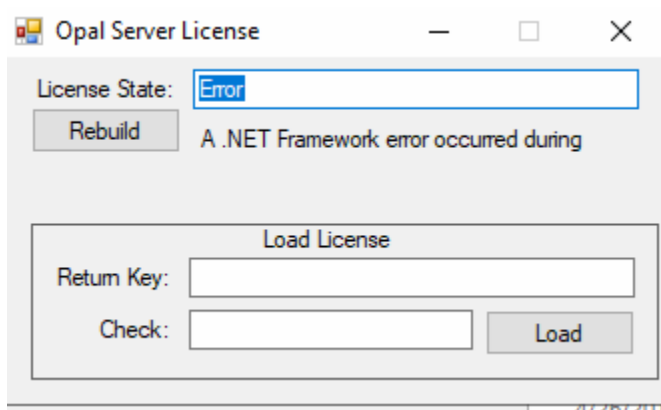


- 3) Click on the license Tab

OPAL License Rebuild Instructions

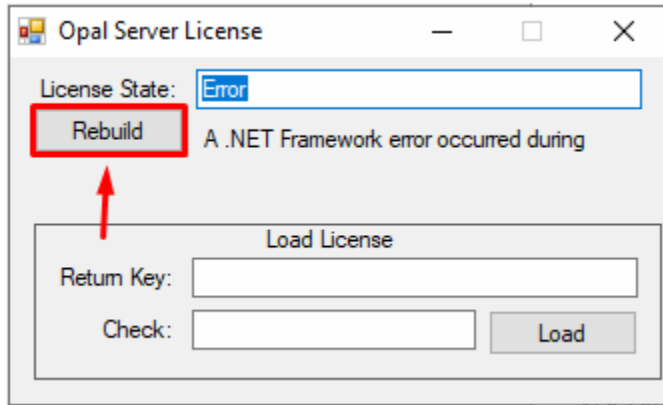


4) You may see “error” or “invalid”

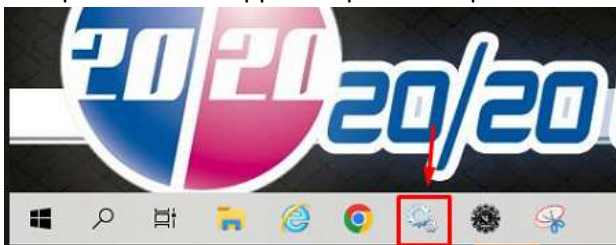


5) Click on “Rebuild” and choose ‘Yes’ to any prompts that appear

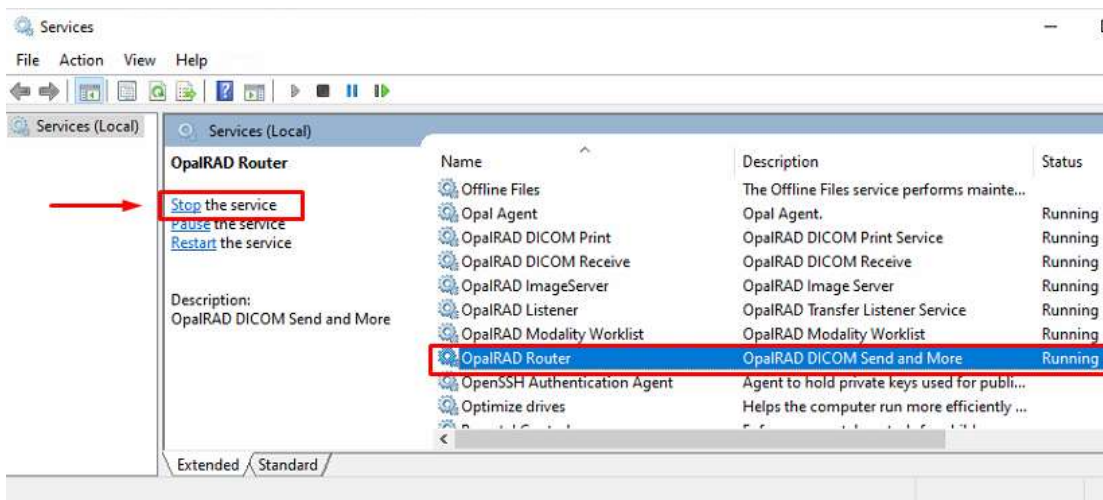
OPAL License Rebuild Instructions



NOTE: If rebuild fail during the process you might need to manually stop opal router service
 A= Open "Services app" on opal server pc. Link on task bar or use windows search

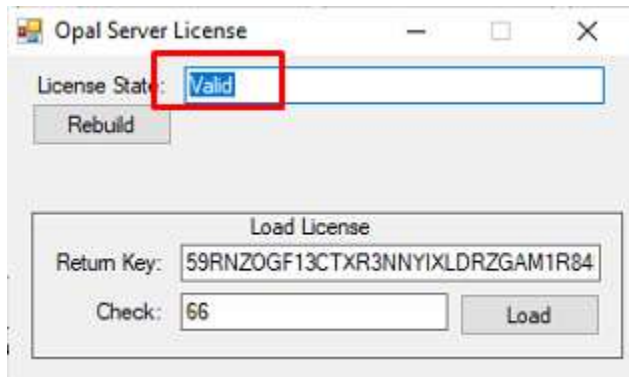


B= Stop OpalRad Router service



OPAL License Rebuild Instructions

- 6) Repeat Step 5
- 7) When license rebuild is complete you should see the following



- 8) Start opalRad router via "services"

****If you continue to see Error of Invalid or still can not login into OPALRAD Study list or web portal please call 20/20 Support for assistance @ 866-734-6234 opt 1****