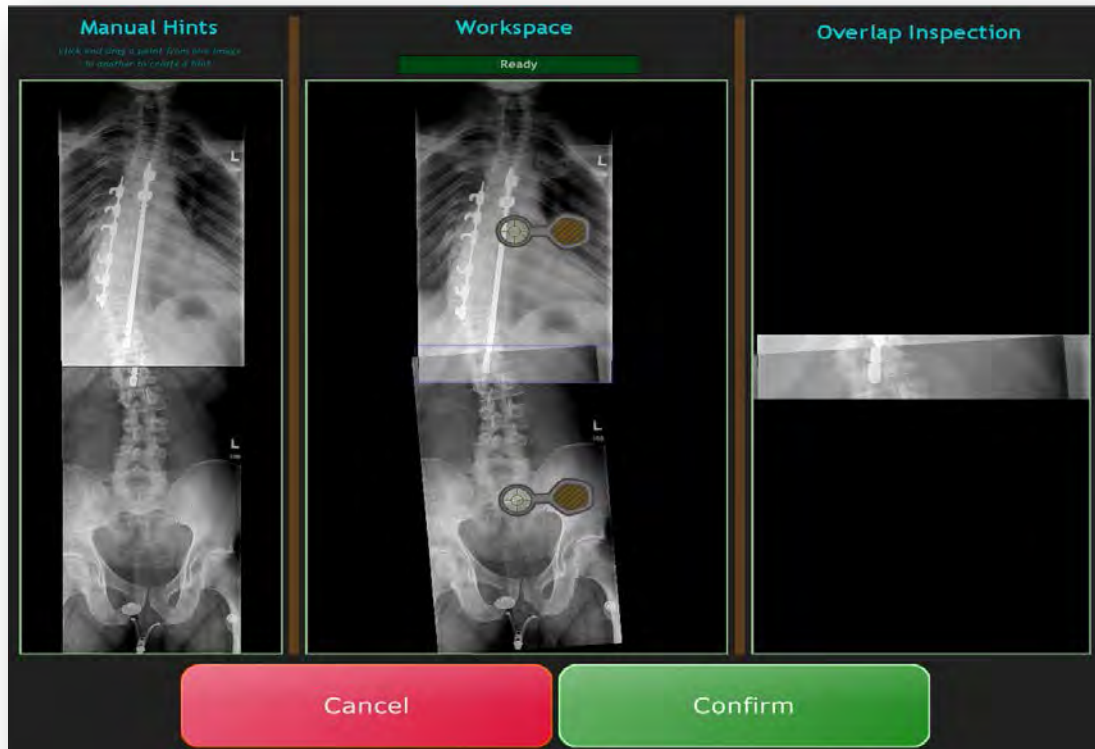
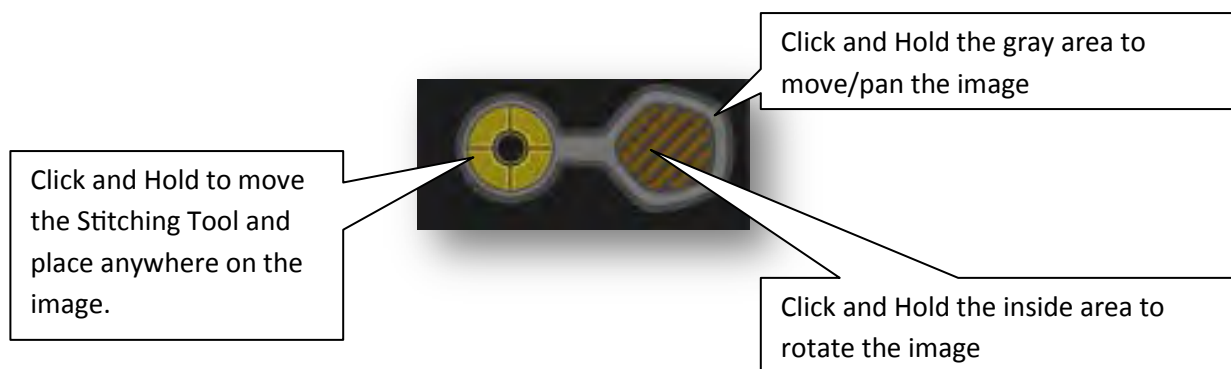
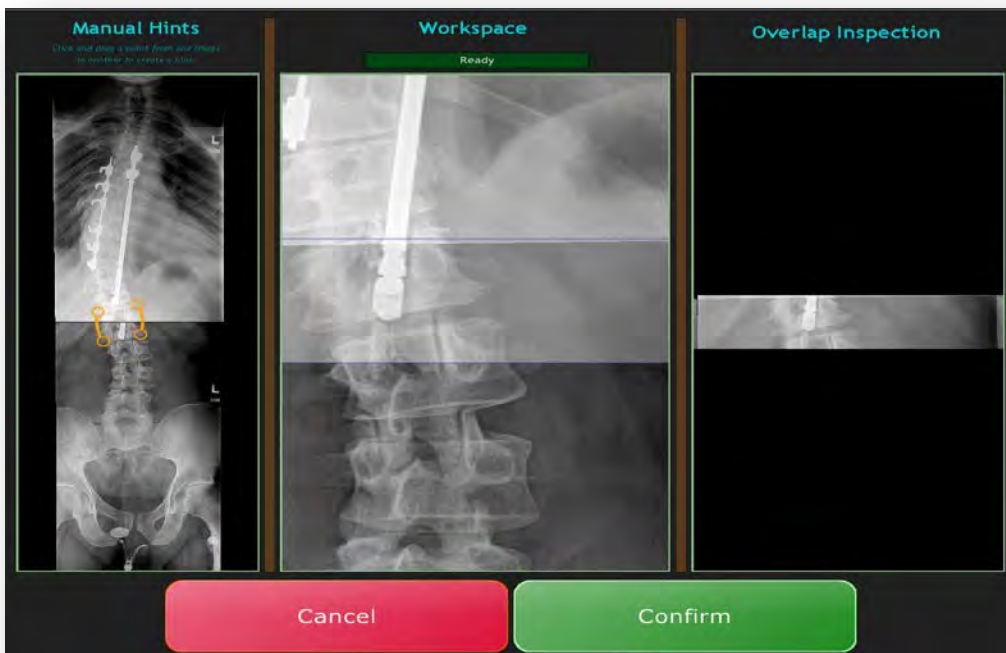
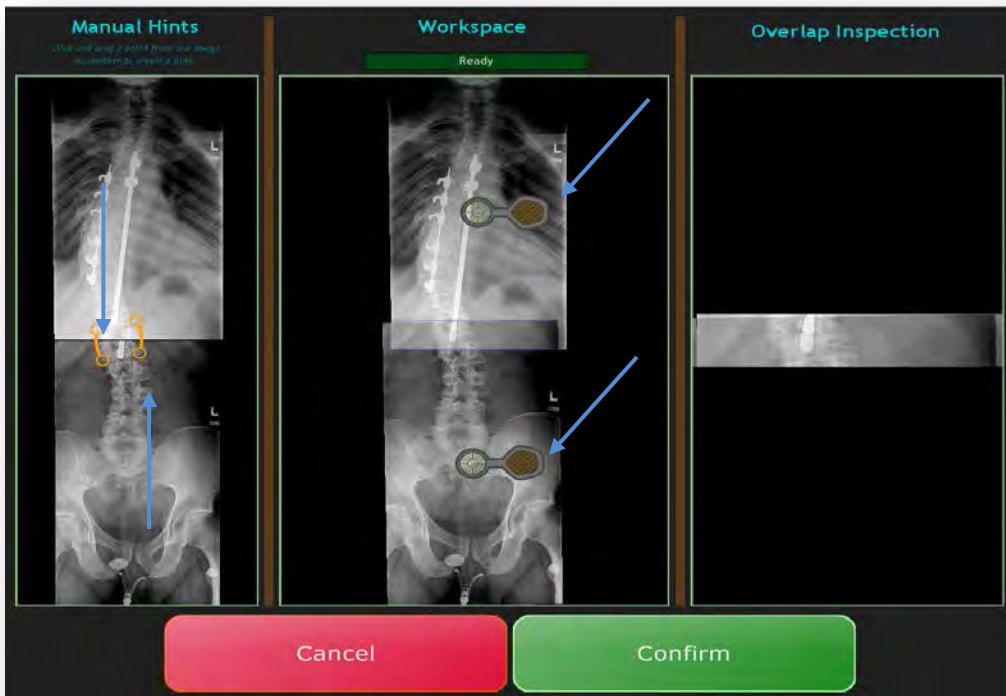


- 1- From the thumbnails drag and drop first the image to go on top to the Manual Hints window.
- 2- Repeat step 1 for image to go on bottom of the new stitched image

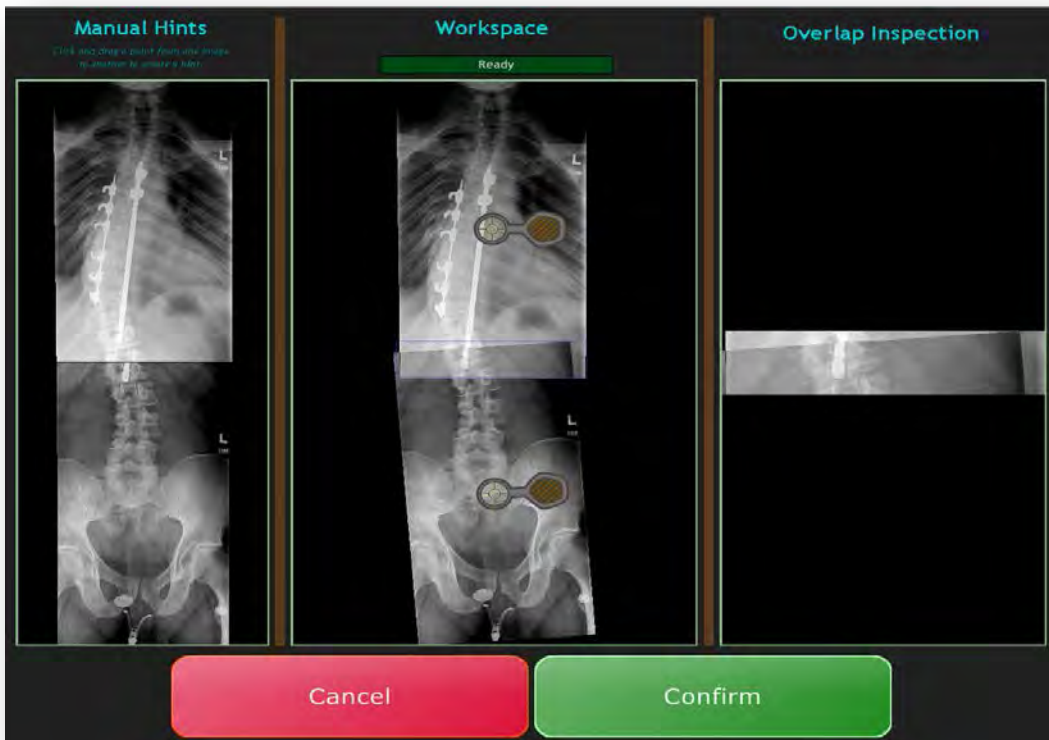
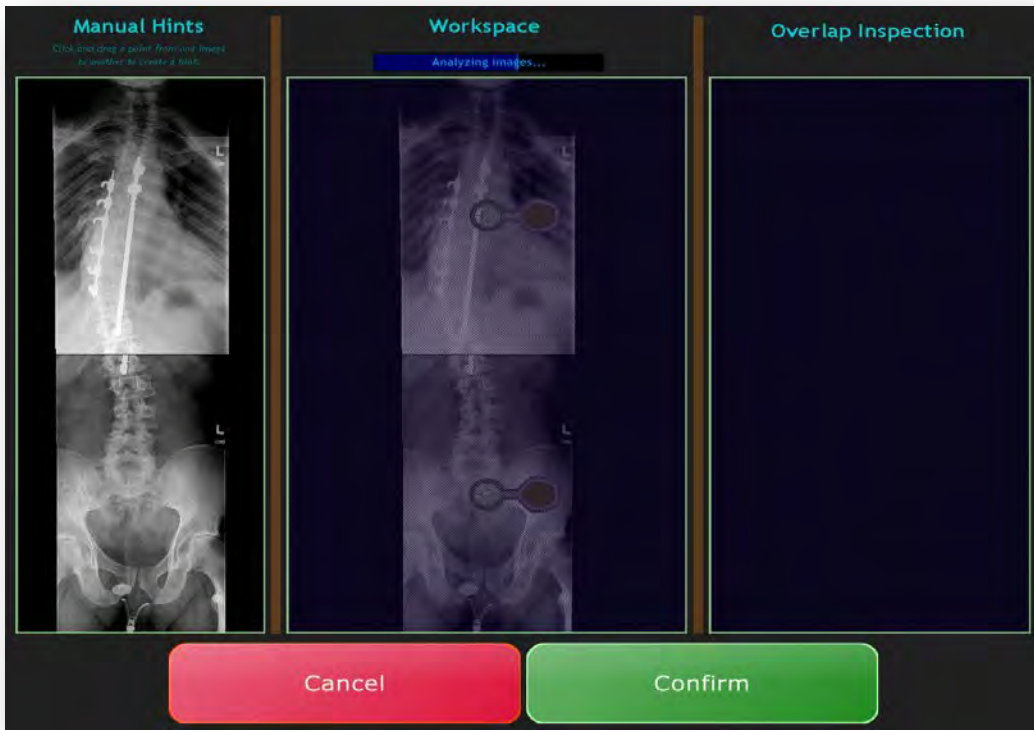


- 3- **Manual Hints** section on the left of the is to select the points of the images you want to stitch(can place a dot on each image that are the same location for the software to re-stitch the image.
Workspace section in the middle is the image of the automated stitch.
Overlap Inspection on the right is a magnified area of the stitched area.
- 4- Using the Stitching Tool in the Workspace section allows the user to place hint points, rotate, move and pan the image.





To zoom an image as shown in here, use the mouse wheel to enlarge the image.



- 5- The middle image section is analyzing the image and auto-stitching, it will reach 100% and say it is finished.
- 6- Once you are satisfied with the stitched image press the Confirm Button.