

Viztek PACS Solutions

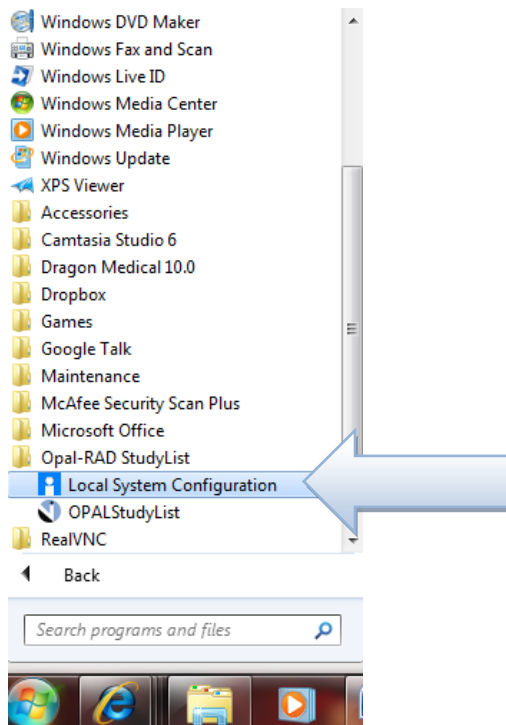
Stand-Alone Acquire: The defining characteristic of a stand-alone acquire is that it runs the Opal/Onyx StudyList CLIENT and connects to a data base that is run and stored *locally* on the machine in question.

Dependent Acquire: The defining characteristic of a dependent acquire is that the Opal/Onyx StudyList CLIENT points to another system for the data base and image resources.

In order to quickly determine what kind of system you are on you must be able to see how the study list client configuration is setup.

For Opal RAD

Go to your Start Menu of the computer in question and follow the program path for **Opal-RAD StudyList>> Local System Configuration** as shown below.



If, for whatever reason the entry is not in the start menu, it can also be found by browsing the computer hard drive and navigating to the directory -- **C:\Opal\bin**

How to Identify a Stand Alone vs Dependent Acquire

The screenshot shows the 'Opal Rad Configuration' window. On the left, a list contains 'localhost'. The 'Server Connection Settings' section has 'Server IP' set to 'localhost' (indicated by a blue arrow), 'Name' set to 'localhost', 'User ID' set to 'sa', 'Password' set to '*****', 'Initial Catalog' set to 'OPALRAD', and 'Packet Size' set to '4096'. Below this are 'Add', 'Delete', and 'Edit' buttons. The 'Local Workstation Settings' section includes 'Study List Refresh Interval' (2 Minutes), 'Send Queue Refresh Interval' (90 Seconds), 'Transfer Log Refresh Interval' (90 Seconds), and a checked 'Legacy Disc Burning' checkbox. At the bottom are 'Save and Exit' and 'Exit' buttons.

In this example, you can see that the Opal StudyList CLIENT points to *Localhost*. This indicates that this system's study list is populated by a data base located on the local system. If this is the system that is connected via USB or FireWire directly to the CR cassette reader, then this system would be a **STAND ALONE** acquire workstation.

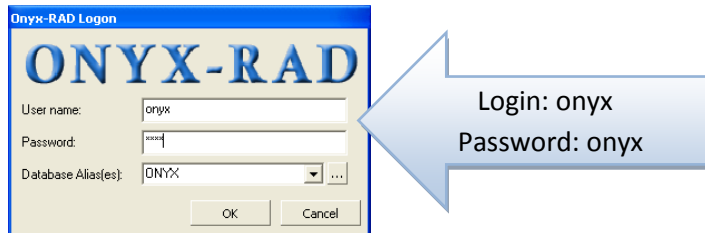
The screenshot shows the 'Opal Rad Configuration' window. On the left, a list contains '12.70.252.161'. The 'Server Connection Settings' section has 'Server IP' set to '12.70.252.161' (indicated by a blue arrow), 'Name' set to 'TEST', 'User ID' set to 'sa', 'Password' set to '*****', 'Initial Catalog' set to 'OPALRAD', and 'Packet Size' set to '4096'. Below this are 'Add', 'Delete', and 'Update' buttons. The 'Local Workstation Settings' section includes 'Study List Refresh Interval' (2 Minutes), 'Send Queue Refresh Interval' (90 Seconds), 'Transfer Log Refresh Interval' (90 Seconds), and an unchecked 'Legacy Disc Burning' checkbox. At the bottom are 'Save and Exit' and 'Exit' buttons.

If an IP address, or name of another computer system is indicated under server IP, then it would be considered a **DEPENDENT** acquire and would not store images or data base information directly to this local computer but instead on the computer it points to for its study list.

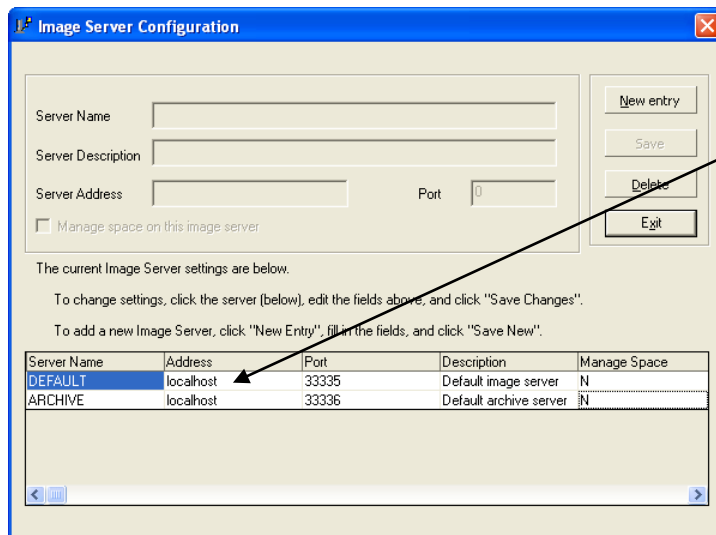
For Onyx-Rad

To access the Onyx-RAD system configuration you can either click on Start>>Run>>Type “**cfgmgr**” and click OK, or go to the **Onyx-RAD\bin** folder where the cfgmgr.exe file can be launched.

You will be given a prompt to login.



Once you have logged in, double click on the icon labeled “**Image Server Config**”. This will open the system configuration that shows where the Onyx RAD StudyList CLIENT points to for its data base.



As you can see the address here is *localhost*. That indicates that this installation of Onyx-RAD is configured to point to itself for its data base information = **STAND ALONE**

*Again, if a different name/ IP address were present this would indicate that it points to a different computer for its data base information and possible image storage = **DEPENDENT**