



# iRay 10x12 Tethered Installation Guide

---



April 2, 2018

Version 1.01

## Table of Contents

<b>1</b>	<b>SPECIAL NOTE</b> .....	<b>3</b>
<b>2</b>	<b>PACKAGING</b> .....	<b>3</b>
2.1	EXAMINE PACKAGING .....	3
2.2	VERIFY PACKAGE CONTENTS .....	3
<b>3</b>	<b>CONNECTION &amp; SETUP</b> .....	<b>4</b>
3.1	POWER & ETHERNET .....	4
3.1.1	Single Panel Configuration (no generator integration) .....	4
3.2	ENCLOSURE .....	4
3.3	PANEL LAN CONNECTION .....	5
3.4	CALIBRATION .....	6
<b>4</b>	<b>GENERAL INFORMATION, OPERATION, MAINTENANCE</b> .....	<b>6</b>

## 1 Special Note

Please read and review the iRay-Venu1012X User Manual before proceeding with this guide. By proceeding, you agree that you have read and understand all content within that User Manual. The iRay-Venu1012X User Manual is included with the unit and can also be found on the 20/20 Imaging website.

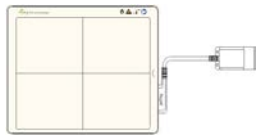
## 2 Packaging

### 2.1 Examine packaging

Examine the packaging for any damage. Notify the 20/20 Imaging sales coordinator/manager immediately if any damage to the boxes has occurred.

### 2.2 Verify package contents

#### 1. Detector Panel & Detector Cable



#### 2. Enclosure



#### 3. 10m Gigabit Ethernet Cable



#### 4. A/C Adapter



#### 5. A/C Power Cable



6. CD-Rom with Calibration Data & User Manual



## 3 Connection & Setup

### 3.1 Power & Ethernet

#### 3.1.1 Single Panel Configuration (no generator integration)

1. At the splitter, connect the power cable, followed by the 10m Ethernet cable  
\*for the PXS710 unit, refer to that installation guide for internal connectivity



2. Plug the other end of the A/C adapter into a surge protected wall outlet or battery-backup (surge side)
3. Install Ethernet cable.
  - Single Panel Configuration: Plug the other end of the 10m Ethernet cable into the on-board NIC card of the PC.
  - Dual Panel Configuration: Plug the other ends of each 10m Ethernet cable into the ports on the 5-port Gigabit Ethernet switch and connect the 3' Ethernet cable from the 5-port switch into the on-board NIC card of the PC.

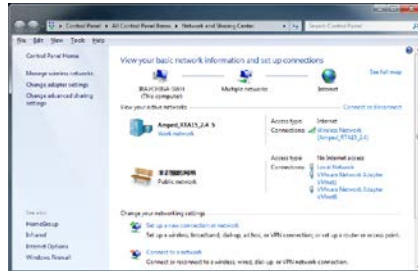
### 3.2 Enclosure

1. Route cable inside of enclosure. Use a soft but blunt object to tuck cable inside of enclosure.

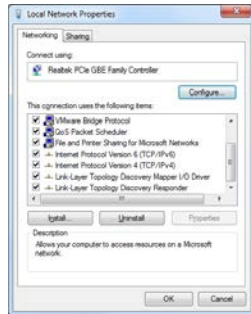


### 3.3 Panel LAN Connection

1. Open Local Network Management.



2. Open TCP/IPv4 settings.



3. Ensure the IP address and Subnet Mask are set (192.168.8.188 / 255.255.255.0).



### 3.4 Calibration

Each DR Panel is pre-calibrated. If a re-calibration is necessary, refer to Calibration Guide to set calibration data and/or perform calibration.

## 4 General Information, Operation, Maintenance

If you encounter issues not addressed by this user guide, please refer to the current revision iRay-Venu1012X User Manual, or contact technical support for additional assistance.